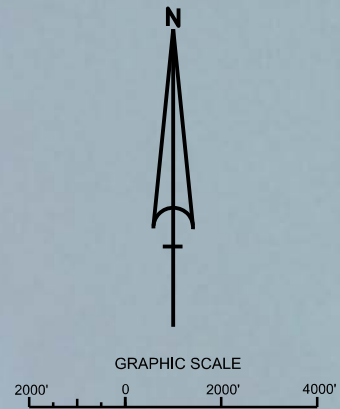


NAPLES TO BIG MARCO PASS COLLIER COUNTY, FLORIDA POST-HURRICANE IAN EXAM SURVEY FY23 6-FOOT PROJECT

SURVEY NOTES

1. REFER TO SURVEY NO. 23-018.
2. SOUNDINGS ARE IN FEET AND TENTHS AND REFER TO NOAA'S REPORTED MEAN LOWER LOW WATER (MLLW) OF THE 1983-2001 TIDAL EPOCH.
3. TIDAL REDUCTIONS WERE OBTAINED UTILIZING A REAL-TIME KINEMATIC (RTK) GPS AND REFERENCED TO MLLW UTILIZING A HYPACK KINEMATIC TIDE DATUM (KTD) MODEL. KTD FILE NAME IS: "BROWARD-MIAMIDADE-MONROE-COLLIER_2018 05 02.KTD".
4. ALL ELEVATIONS ARE BELOW THE CHART DATUM UNLESS PRECEDED BY A (+) SIGN.
5. PLANE COORDINATES ARE BASED ON THE TRANSVERSE MERCATOR PROJECTION FOR THE EAST ZONE OF FLORIDA AND REFERENCED TO NORTH AMERICAN DATUM OF 1983 (NAD83). GEOID MODEL 2018 (FIXED) WAS USED.
6. THIS SURVEY WAS PERFORMED USING REAL-TIME KINEMATIC (RTK) GPS POSITIONING WITH THE FOLLOWING REFERENCE BASE LOCATIONS:
REFERENCE BASE LOCATED AT "NGP 101" (PID: BBHZ89)
REFERENCE BASE LOCATED AT "4991 A" (PID: AA7622)
7. DEPTHS DEPICTED BY THIS SURVEY ARE REFERENCED TO MLLW, TIDAL EPOCH 1983-2001 AS REPORTED BY THE NATIONAL OCEANIC AND ATMOSPHERIC ADMINISTRATION (NOAA). NOAA'S VDATUM MODEL WAS USED AND CALIBRATED TO THE PUBLISHED MLLW HEIGHTS OF THE BENCHMARK ASSOCIATED WITH THE TIDE GAGE SITE SPECIFIED BELOW:
NGS BENCHMARK "5114 A" FOR CUT-1 THRU CUT-12 (PID: BBHZ89)
NGS BENCHMARK "4991 A" FOR CUT-13 THRU CUT-V (PID: AA7622)
8. VERTICAL MEASUREMENTS WERE MADE USING AN EDGETECH 6205 MULTI-BEAM ECHOSOUNDER OPERATING AT 550 KHZ AND AN ECHOTRAC E20 SINGLE-BEAM ECHOSOUNDER OPERATING AT 24/200 KHZ). ALL SOUNDINGS SHOWN ARE IN HIGH FREQUENCY.
9. AIDS TO NAVIGATION WERE LOCATED DURING THIS SURVEY.
10. NO CHANNEL FILE EXISTS FOR THIS PROJECT. APPROXIMATE CENTERLINE FOR THE PROJECT AREA WAS DETERMINED BY EXISTING NAVIGATION AIDS AND/OR DEEP WATER.
11. THE INFORMATION DEPICTED ON THIS MAP REPRESENTS THE RESULTS OF SURVEYS MADE ON THE DATES INDICATED ABOVE AND CAN ONLY BE CONSIDERED AS INDICATING THE GENERAL CONDITIONS AT THAT TIME. THIS CHART IS SOLELY FOR THE DISTRIBUTION OF AVAILABLE DEPTHS AT THE TIME OF THE SURVEY.
12. SURVEY ACCURACY PERFORMANCE STANDARDS, QUALITY CONTROL, AND QUALITY ASSURANCE REQUIREMENTS WERE FOLLOWED DURING THIS SURVEY IN ACCORDANCE WITH USACE EM 1110-2-1003, HYDROGRAPHIC SURVEYING, 30 NOV 2015.

LEGEND	
	MONUMENT
	LIGHTED BUOY
	GREEN DAYBEACON
	RED DAYBEACON
	RED LIGHTED BUOY
	GREEN LIGHTED BUOY
	CAN BUOY
	NUN BUOY
	TIDE STAFF
	PROJECT DEPTH



SHEET INDEX

US Army Corps of Engineers
Jacksonville District

SAFETY ON THIS JOB
DEPENDS ON YOU

DEPARTMENT OF THE ARMY
JACKSONVILLE DISTRICT, CORPS OF ENGINEERS
JACKSONVILLE, FLORIDA

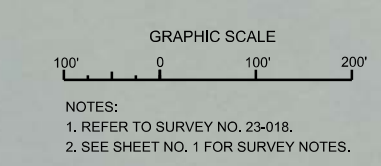
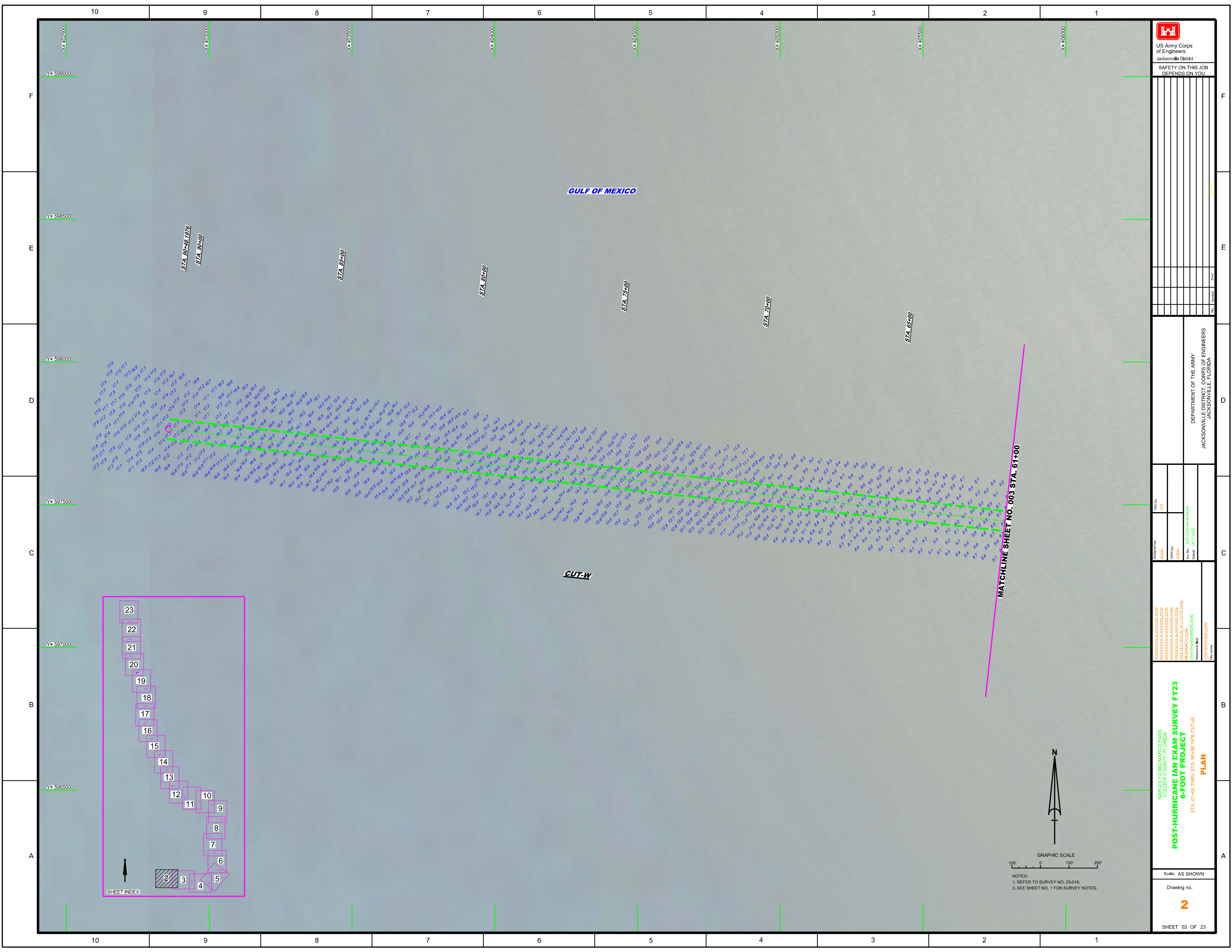
DESIGNED BY: WRM
CHECKED BY: GHR
DATE: OCT 2022

PROJECT: NAPLES TO BIG MARCO PASS
INDEX, LOCATION AND VICINITY MAP

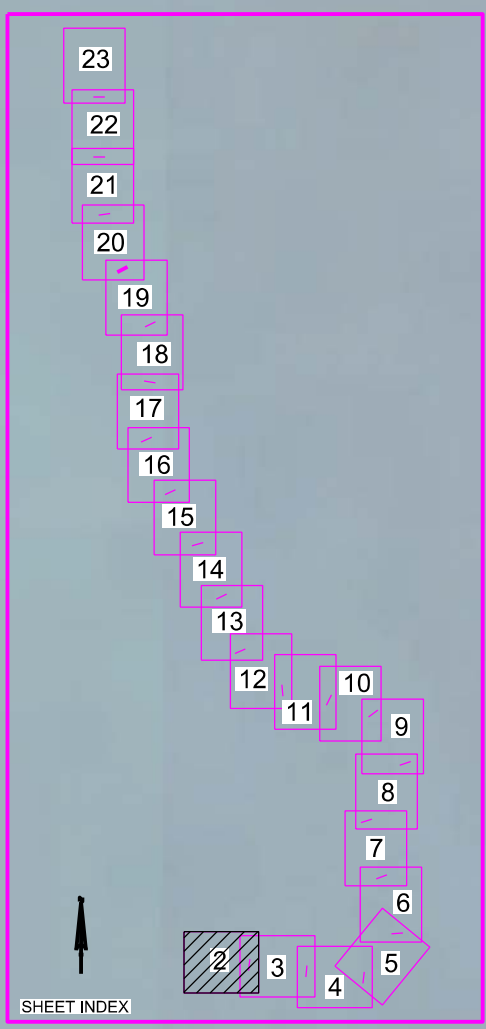
Scale: AS SHOWN

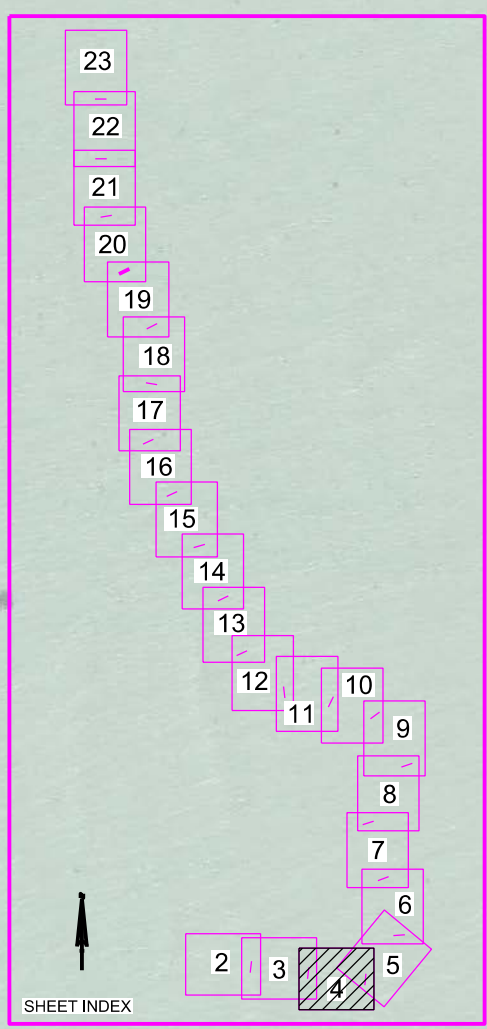
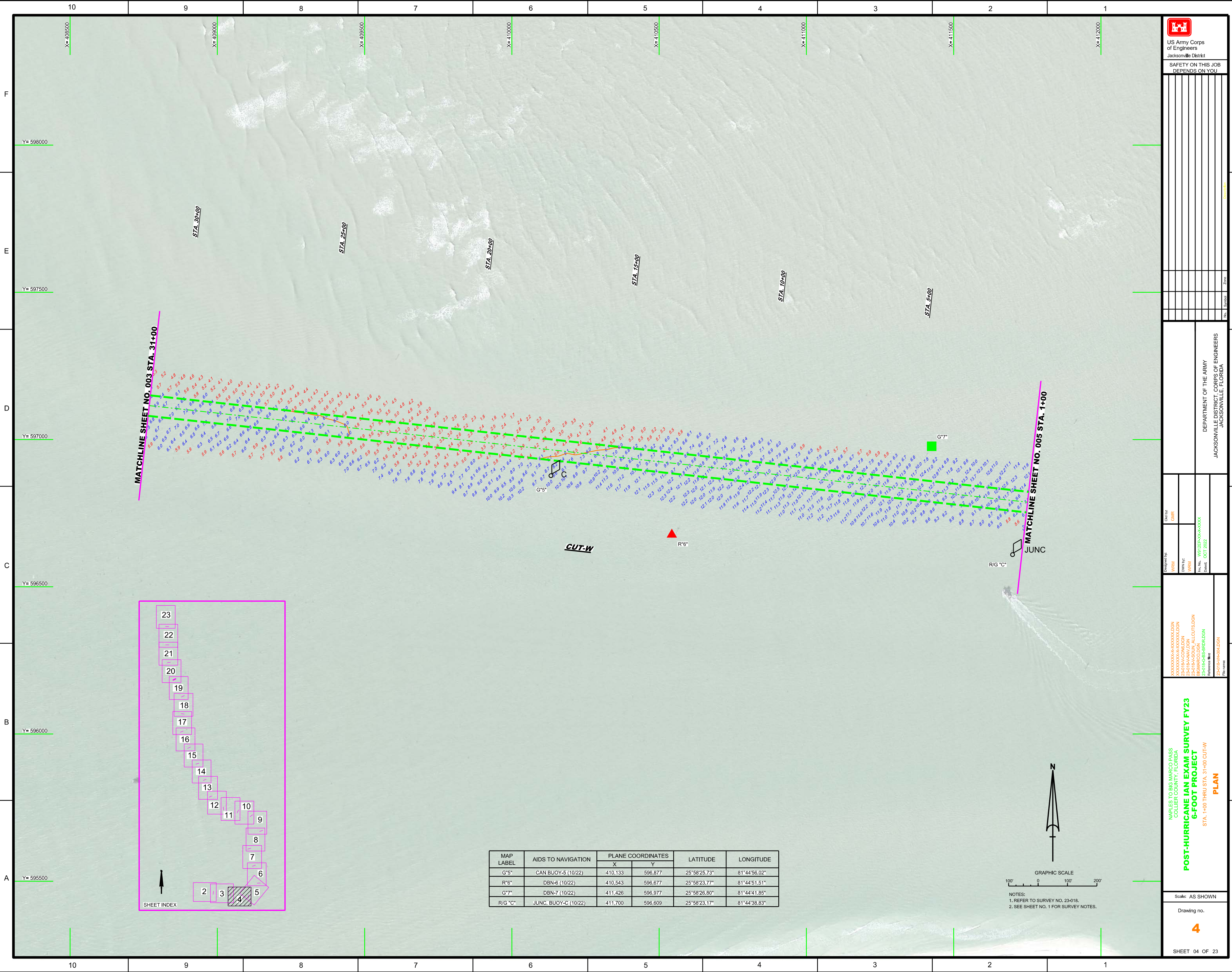
Drawing no. **1**

SHEET 01 OF 23

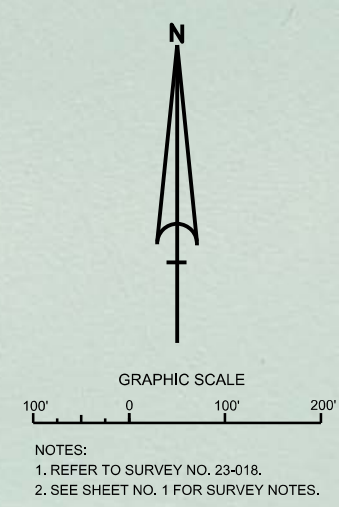


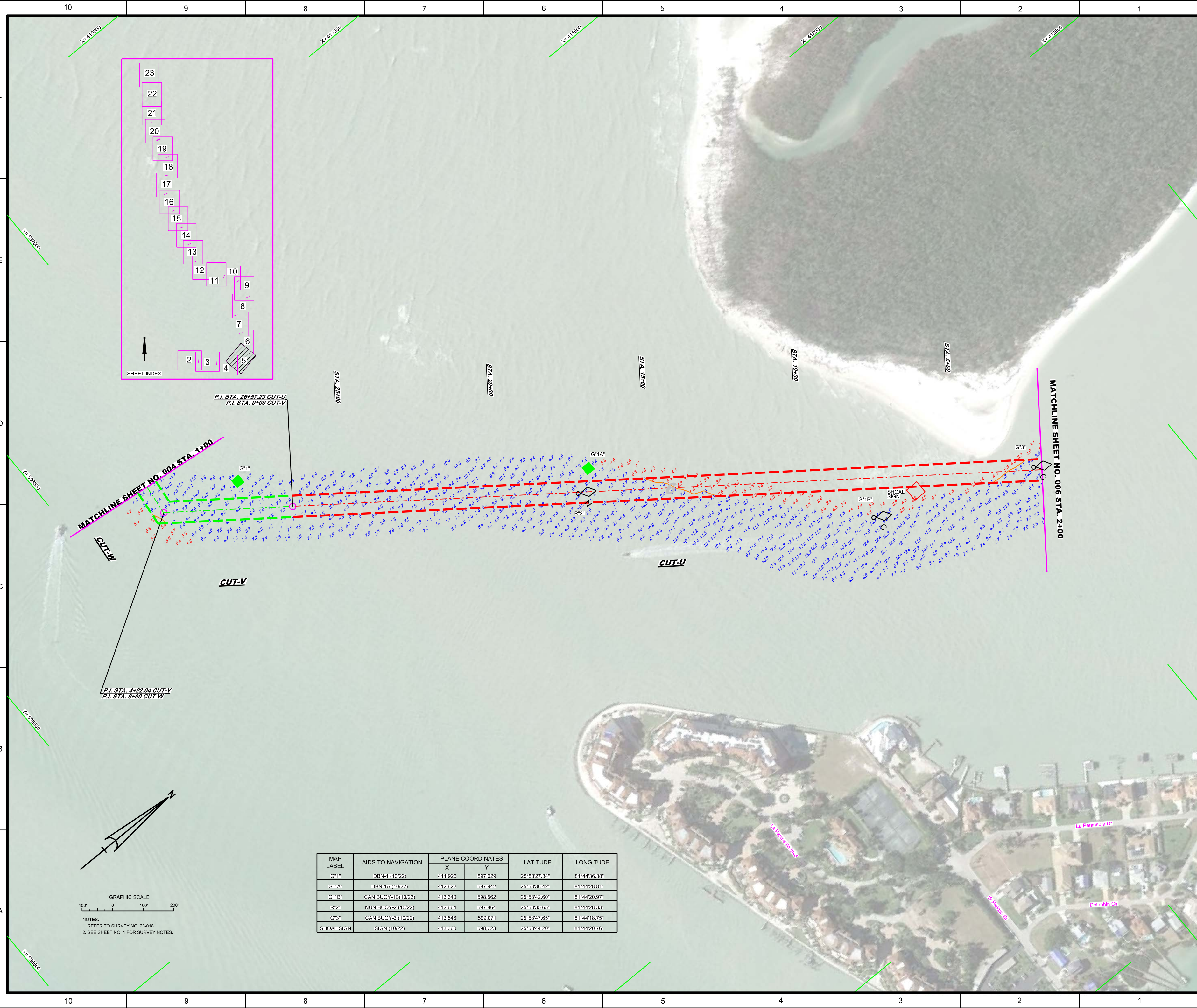
NOTES:
1. REFER TO SURVEY NO. 23-018.
2. SEE SHEET NO. 1 FOR SURVEY NOTES.





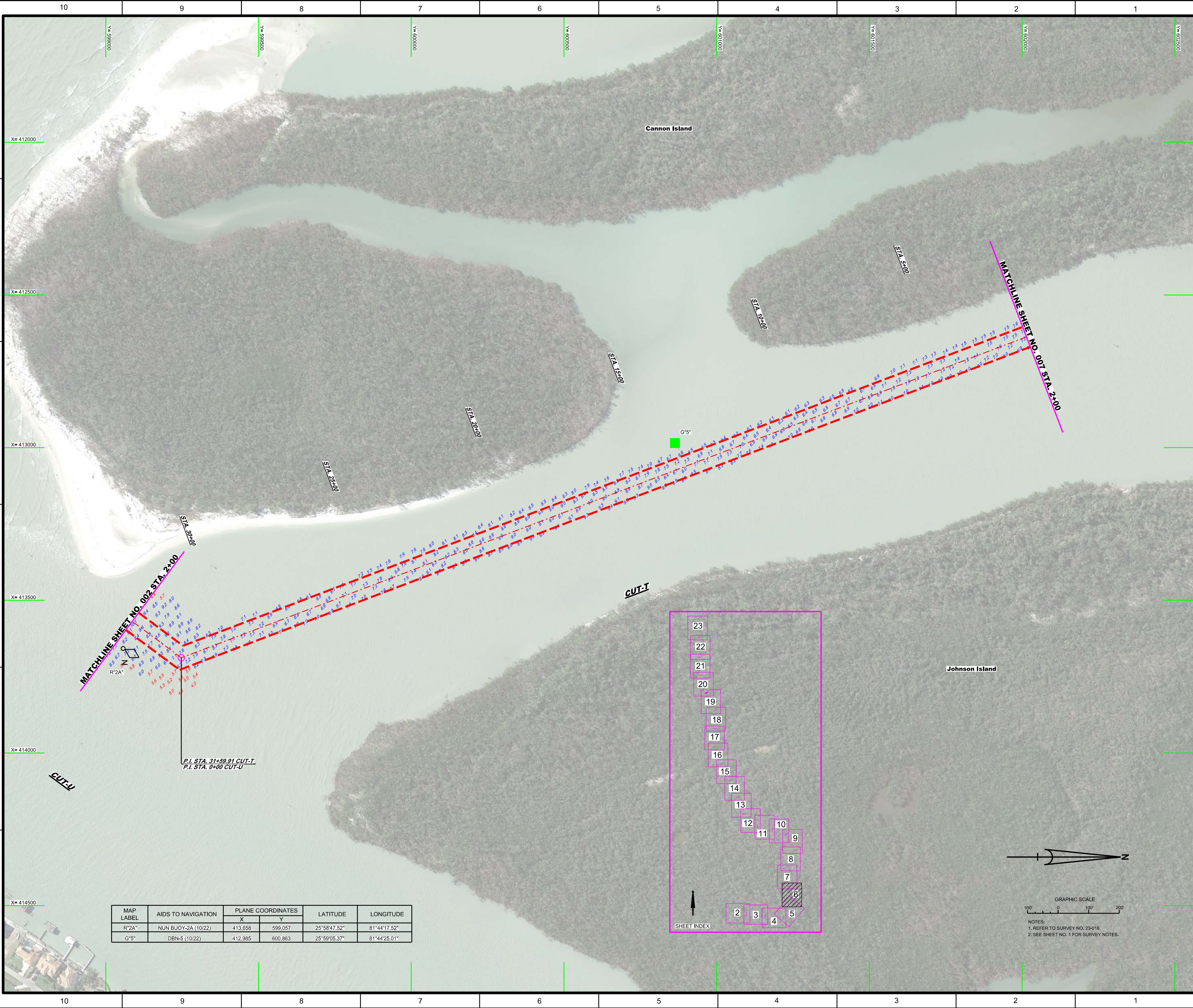
MAP LABEL	AIDS TO NAVIGATION	PLANE COORDINATES		LATITUDE	LONGITUDE
		X	Y		
G5	CAN BUOY-5 (10/22)	410,133	596,877	25°58'25.73"	81°44'56.02"
R6	DBN-6 (10/22)	410,543	596,677	25°58'23.77"	81°44'51.51"
G7	DBN-7 (10/22)	411,426	596,977	25°58'26.80"	81°44'41.85"
R/G C	JUNC, BUOY-C (10/22)	411,700	596,609	25°58'23.17"	81°44'38.83"





MAP LABEL	AIDS TO NAVIGATION	PLANE COORDINATES		LATITUDE	LONGITUDE
		X	Y		
G*1*	DBN-1 (10/22)	411,926	597,029	25°58'27.34"	81°44'36.38"
G*1A*	DBN-1A (10/22)	412,622	597,942	25°58'36.42"	81°44'28.81"
G*1B*	CAN BUOY-1B (10/22)	413,340	598,562	25°58'42.60"	81°44'20.97"
R*2*	NUN BUOY-2 (10/22)	412,664	597,864	25°58'35.65"	81°44'28.33"
G*3*	CAN BUOY-3 (10/22)	413,546	599,071	25°58'47.65"	81°44'18.75"
SHOAL SIGN	SIGN (10/22)	413,360	598,723	25°58'44.20"	81°44'20.76"

NOTES:
 1. REFER TO SURVEY NO. 23-018.
 2. SEE SHEET NO. 1 FOR SURVEY NOTES.



MAP LABEL	AIDS TO NAVIGATION	PLANE COORDINATES		LATITUDE	LONGITUDE
		X	Y		
R"2A"	NUN BUOY-2A (10/22)	413,658	599,057	25°58'47.52"	81°44'17.52"
G"5"	DBN-5 (10/22)	412,985	600,863	25°59'05.37"	81°44'25.01"

US Army Corps of Engineers
Jacksonville District

SAFETY ON THIS JOB
DEPENDS ON YOU

DEPARTMENT OF THE ARMY
JACKSONVILLE DISTRICT, CORPS OF ENGINEERS
JACKSONVILLE, FLORIDA

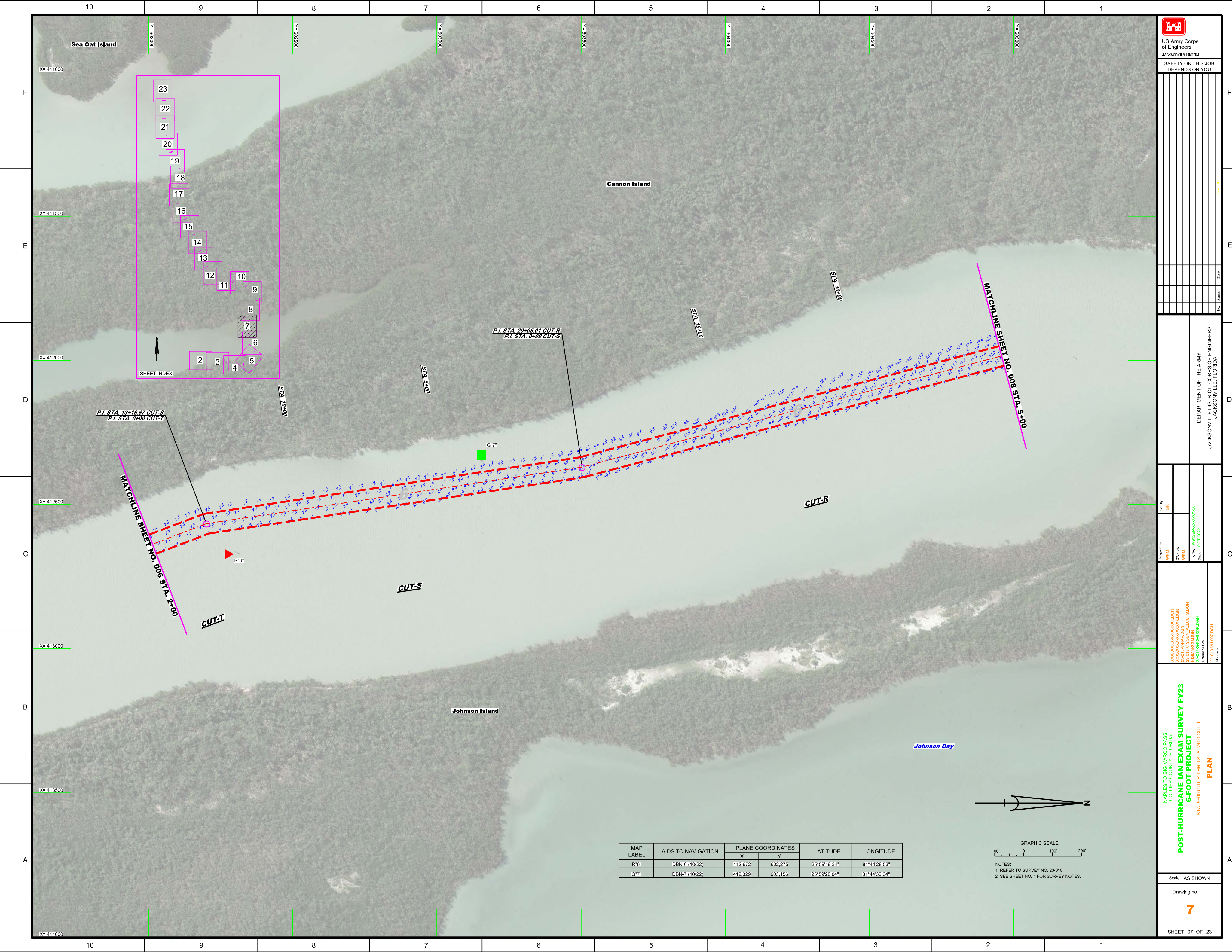
**POST-HURRICANE IAN EXAM SURVEY FY23
6-FOOT PROJECT**

STA. 2+00 CUT-T THRU STA. 2+00 CUT-U
PLAN

Scale: AS SHOWN

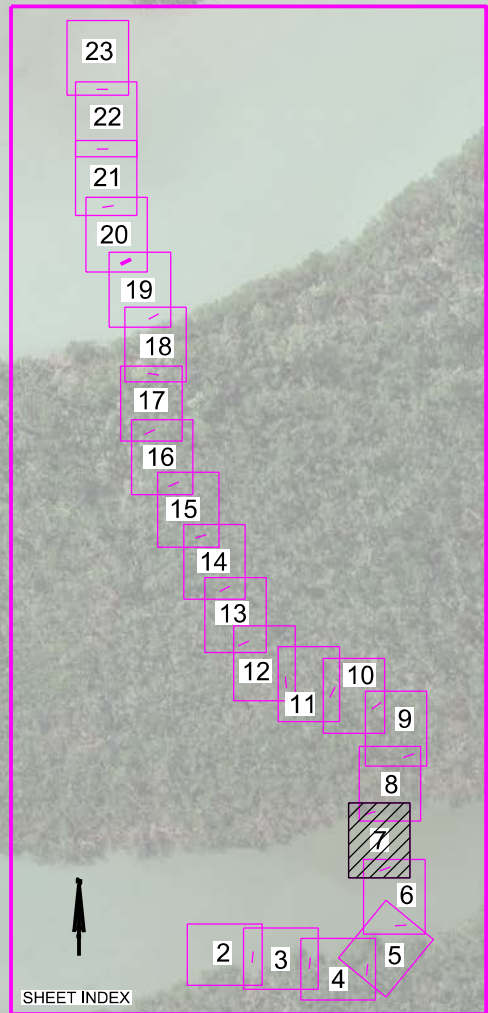
Drawing no.
6

SHEET 06 OF 23



US Army Corps of Engineers
Jacksonville District
SAFETY ON THIS JOB DEPENDS ON YOU

DEPARTMENT OF THE ARMY
JACKSONVILLE DISTRICT, CORPS OF ENGINEERS
JACKSONVILLE, FLORIDA



P.I. STA. 13+16.67 CUT-S
P.I. STA. 0+00 CUT-T

MATCHLINE SHEET NO. 006 STA. 2+00

CUT-T

CUT-S

CUT-R

P.I. STA. 20+05.01 CUT-R
P.I. STA. 0+00 CUT-S

MATCHLINE SHEET NO. 008 STA. 3+00

G7"

R6"



MAP LABEL	AIDS TO NAVIGATION	PLANE COORDINATES		LATITUDE	LONGITUDE
		X	Y		
R6"	DBN-6 (10/22)	412,672	602,275	25°59'19.34"	81°44'28.53"
G7"	DBN-7 (10/22)	412,329	603,156	25°59'28.04"	81°44'32.34"

GRAPHIC SCALE
1" = 100'
0 100' 200'

NOTES:
1. REFER TO SURVEY NO. 23-018.
2. SEE SHEET NO. 1 FOR SURVEY NOTES.

NAVELS TO BIG MARCO PASS
COLLIER COUNTY, FLORIDA

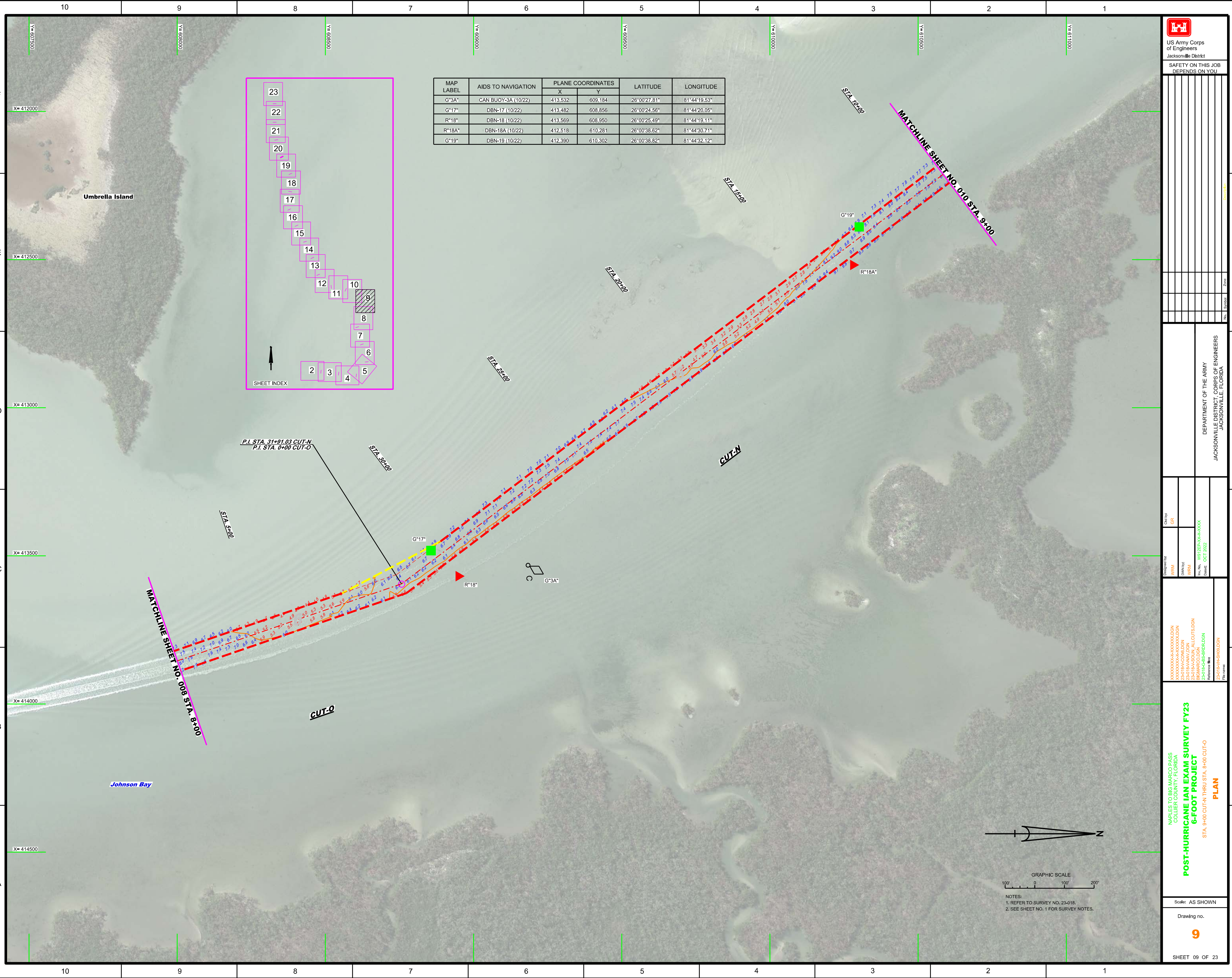
POST-HURRICANE IAN EXAM SURVEY FY23
6-FOOT PROJECT
PLAN

STA. 5+00 CUT-R THRU STA. 2+00 CUT-T


Scale: AS SHOWN

Drawing no.
7

SHEET 07 OF 23



MAP LABEL	AIDS TO NAVIGATION	PLANE COORDINATES		LATITUDE	LONGITUDE
		X	Y		
G-3A	CAN BUOY-3A (10/22)	413,532	609,184	26°00'27.81"	81°44'19.53"
G-17	DBN-17 (10/22)	413,482	608,856	26°00'24.56"	81°44'20.05"
R-18	DBN-18 (10/22)	413,569	608,950	26°00'25.49"	81°44'19.11"
R-18A	DBN-18A (10/22)	412,518	610,281	26°00'38.62"	81°44'30.71"
G-19	DBN-19 (10/22)	412,390	610,302	26°00'38.82"	81°44'32.12"



US Army Corps of Engineers
Jacksonville District

SAFETY ON THIS JOB
DEPENDS ON YOU

DEPARTMENT OF THE ARMY
JACKSONVILLE DISTRICT, CORPS OF ENGINEERS
JACKSONVILLE, FLORIDA

Checked By: GRL

Designed By: WRM

Drawn By: WRM

File No: WJ2225-000-0000

Date: OCT 2022

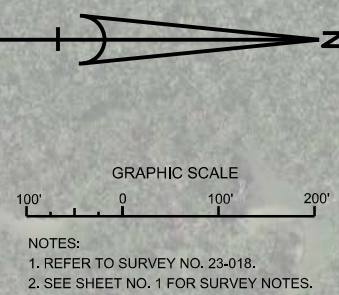
XXXXXXXXXXXXXXXXXXXX.DGN
23019A000000.DGN
23019A000000.DGN
23019A000000.DGN
23019A000000.DGN
23019A000000.DGN
23019A000000.DGN

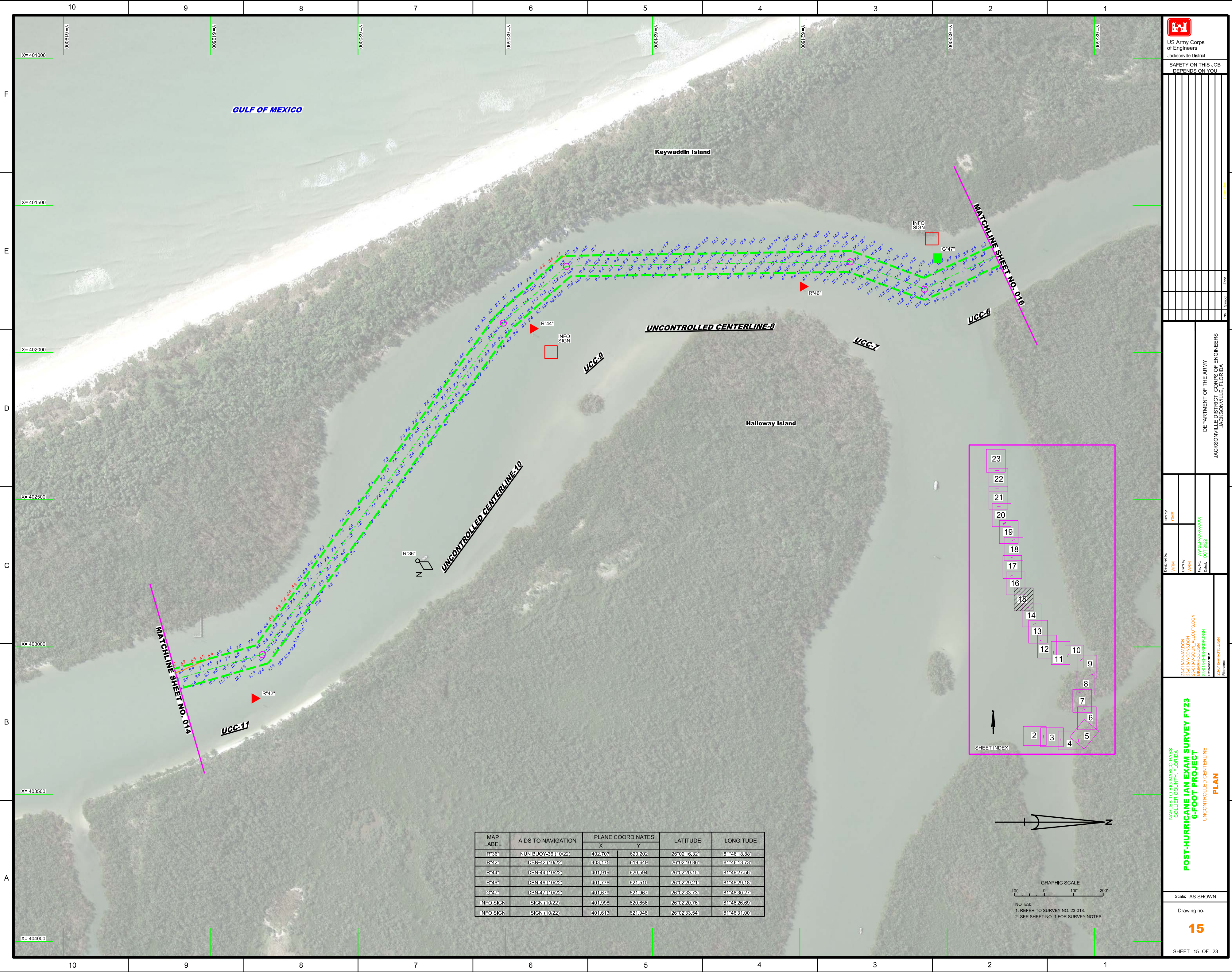
POST-HURRICANE IAN EXAM SURVEY FY23
6-FOOT PROJECT
STA. 9+00 CUT-IN THRU STA. 8+00 CUT-O
PLAN


Scale: AS SHOWN

Drawing no. **9**

SHEET 09 OF 23





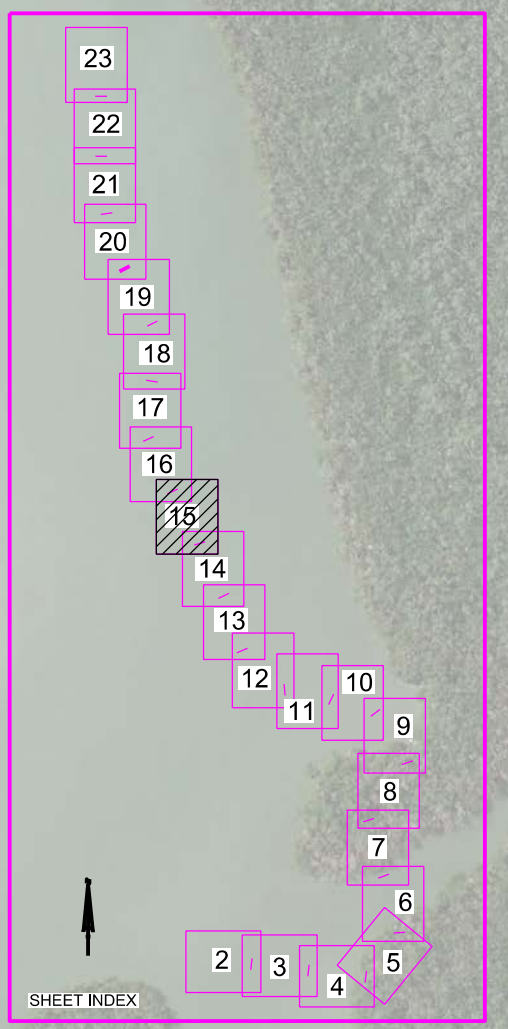

 US Army Corps of Engineers
 Jacksonville District
 SAFETY ON THIS JOB
 DEPENDS ON YOU

DEPARTMENT OF THE ARMY
 JACKSONVILLE DISTRICT, CORPS OF ENGINEERS
 JACKSONVILLE, FLORIDA

DESIGNED BY: WRM
 CHECKED BY: GHR
 DATE: OCT 2022

NAPLES TO BIG MARCO PASS
 COLLIER COUNTY, FLORIDA
POST-HURRICANE IAN EXAM SURVEY FY23
6-FOOT PROJECT
 UNCONTROLLED CENTERLINE
PLAN

MAP LABEL	AIDS TO NAVIGATION	PLANE COORDINATES		LATITUDE	LONGITUDE
		X	Y		
R*36"	NUN BUOY-36 (10/22)	402,707	620,202	26°02'18.82"	81°46'18.88"
R*42"	DBN-42 (10/22)	403,175	619,649	26°02'10.86"	81°46'18.73"
R*44"	DBN-44 (10/22)	401,919	620,594	26°02'20.15"	81°46'27.56"
R*46"	DBN-46 (10/22)	401,776	621,510	26°02'29.21"	81°46'29.18"
G*47"	DBN-47 (10/22)	401,679	621,967	26°02'33.73"	81°46'30.27"
INFO SIGN	SIGN (10/22)	401,998	620,656	26°02'20.76"	81°46'26.69"
INFO SIGN	SIGN (10/22)	401,613	621,948	26°02'33.54"	81°46'31.00"



NOTES:
 1. REFER TO SURVEY NO. 23-018.
 2. SEE SHEET NO. 1 FOR SURVEY NOTES.

Zone	
Scale	
North Arrow	
Grid	
Units	
Projection	
Contour Interval	
Vertical Datum	
Horizontal Datum	
Map Date	
Revision	

DEPARTMENT OF THE ARMY
JACKSONVILLE DISTRICT, CORPS OF ENGINEERS
JACKSONVILLE, FLORIDA

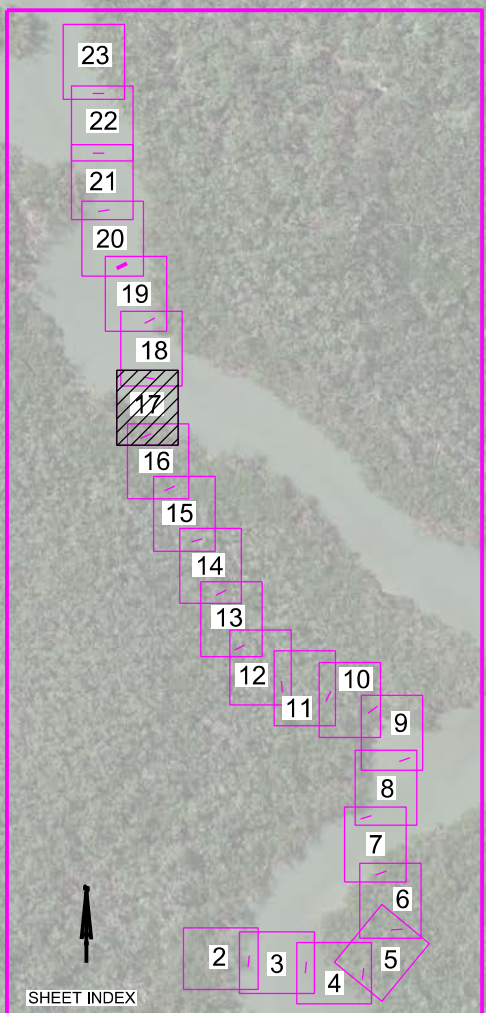
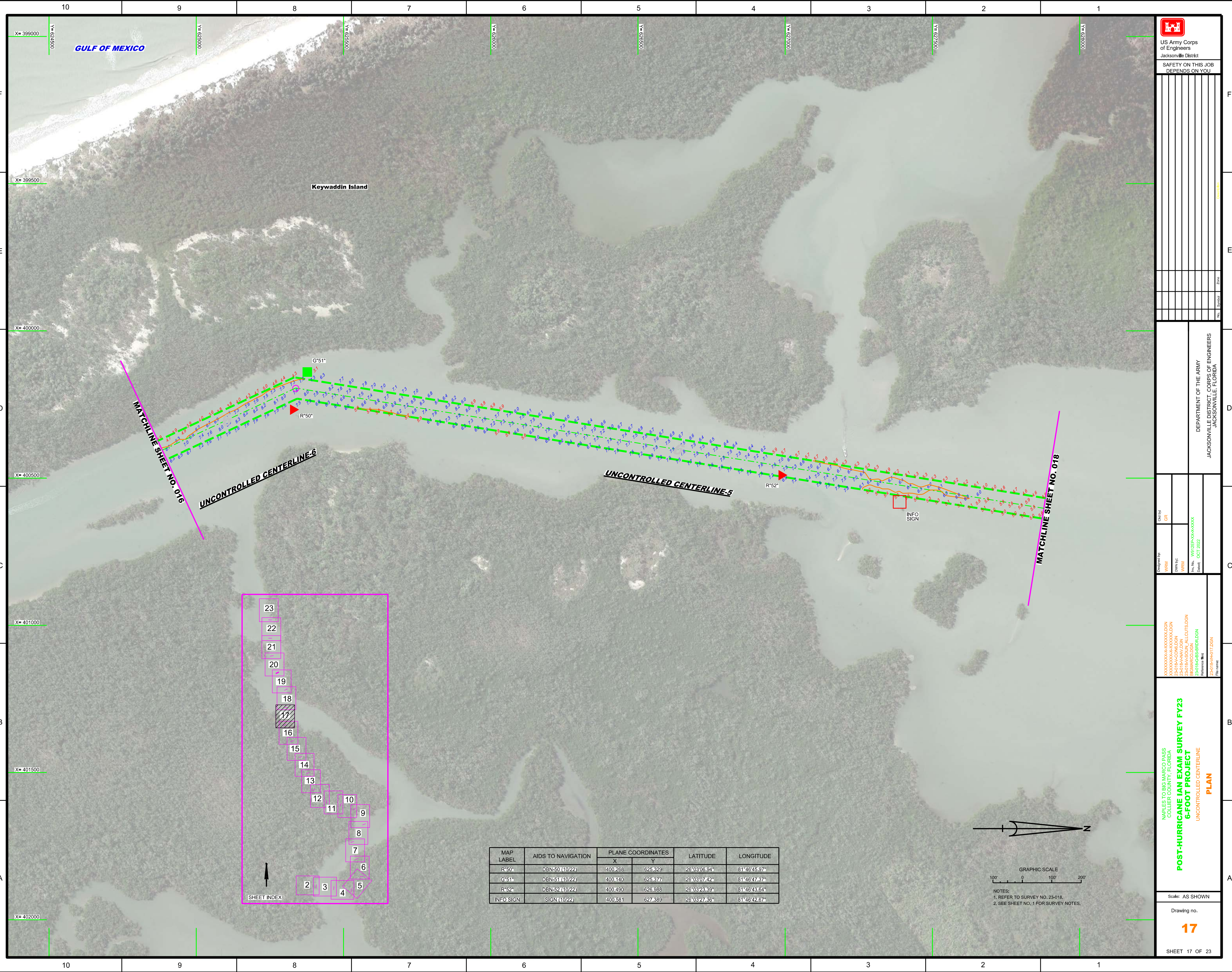
Drawn by: GR
Checked by: GR
Designed by: WRM
Drawn by: WRM
File No: W12P35-A000033
Date: OCT 2022

XXXXXXXXXXXXX.DGN
XXXXXXXXXXA.CAD
XXXXXXXXXAV.DGN
XXXXXXXXX.DGN
XXXXXXXXX.DGN
XXXXXXXXX.DGN
XXXXXXXXX.DGN
XXXXXXXXX.DGN
XXXXXXXXX.DGN
XXXXXXXXX.DGN

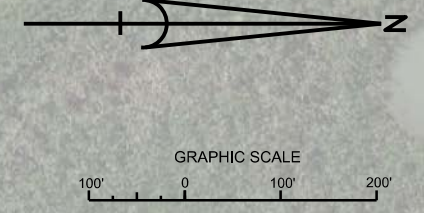
MAPLES TO BIG MARCO PASS
COLLIER COUNTY, FLORIDA
**POST-HURRICANE IAN EXAM SURVEY FY23
6-FOOT PROJECT**
UNCONTROLLED CENTERLINE
PLAN

Scale: AS SHOWN
Drawing no. **17**

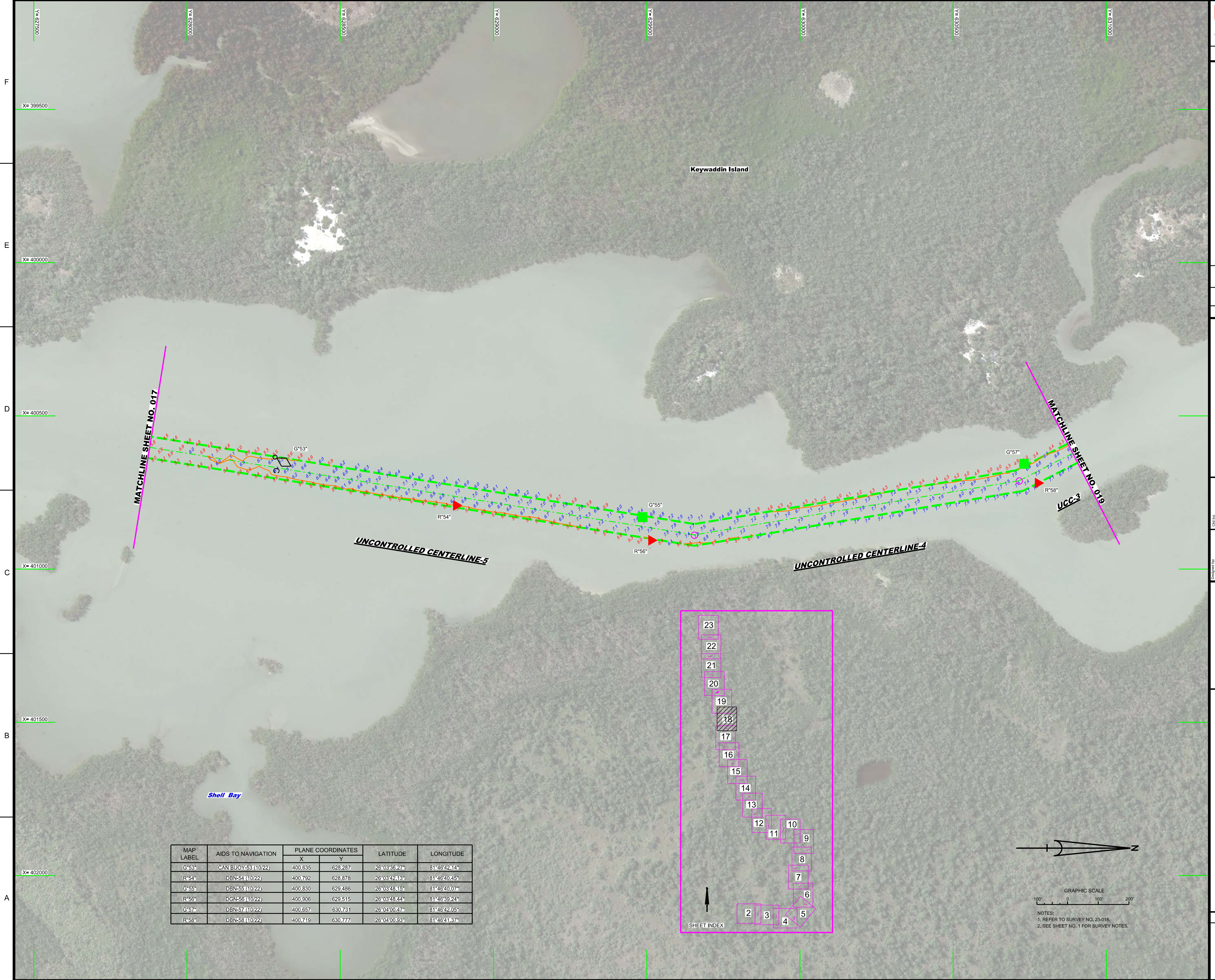
SHEET 17 OF 23



MAP LABEL	AIDS TO NAVIGATION	PLANE COORDINATES		LATITUDE	LONGITUDE
		X	Y		
R50*	DBN501(10/22)	400,268	625,329	26°03'06.94"	81°46'45.97"
G51*	DBN511(10/22)	400,140	625,377	26°03'07.42"	81°46'47.87"
R52*	DBN521(10/22)	400,490	626,888	26°03'23.89"	81°46'43.64"
INFO SIGN	SIGN(10/22)	400,581	627,389	26°03'27.36"	81°46'42.67"



NOTES:
1. REFER TO SURVEY NO. 23-018.
2. SEE SHEET NO. 1 FOR SURVEY NOTES.



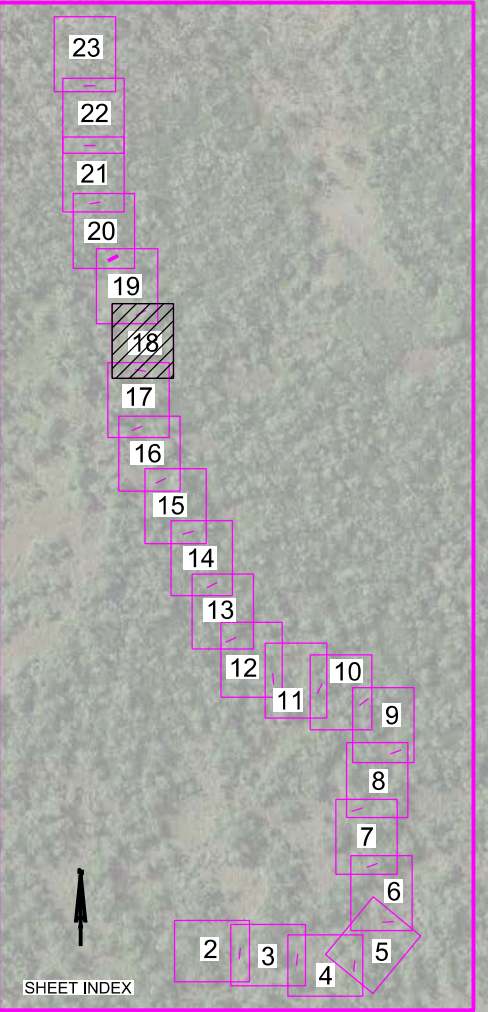
MATCHLINE SHEET NO. 017

MATCHLINE SHEET NO. 019

UNCONTROLLED CENTERLINE-5

UNCONTROLLED CENTERLINE-4

UCC-3



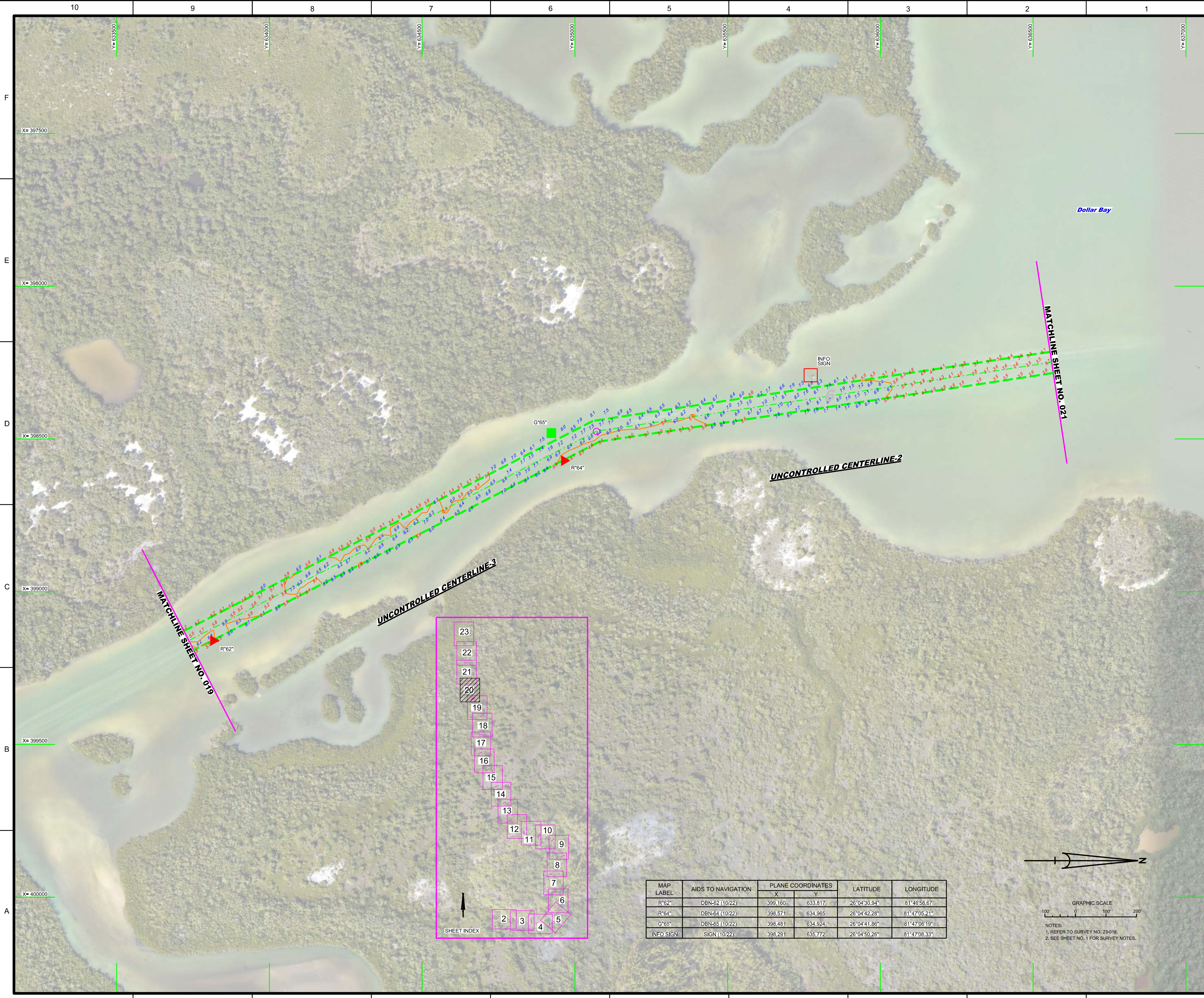
MAP LABEL	AIDS TO NAVIGATION	PLANE COORDINATES		LATITUDE	LONGITUDE
		X	Y		
G*53*	CAN BUOY-53 (10/22)	400,635	628,287	26°03'36.27"	81°46'42.14"
R*54*	DBN-54 (10/22)	400,792	628,878	26°03'42.18"	81°46'40.45"
G*55*	DBN-55 (10/22)	400,830	629,486	26°03'48.15"	81°46'40.07"
R*56*	DCN-56 (10/22)	400,906	629,515	26°03'48.44"	81°46'39.24"
G*57*	DBN-57 (10/22)	400,657	630,731	26°04'00.47"	81°46'42.05"
R*58*	DBN-58 (10/22)	400,719	630,777	26°04'00.93"	81°46'41.37"



NOTES:
1. REFER TO SURVEY NO. 23-018.
2. SEE SHEET NO. 1 FOR SURVEY NOTES.

**NAPLES TO BIG MARCO PASS
COLLIER COUNTY, FLORIDA
POST-HURRICANE IAN EXAM SURVEY FY23
6-FOOT PROJECT
UNCONTROLLED CENTERLINE
PLAN**

Scale: AS SHOWN
Drawing no.
18



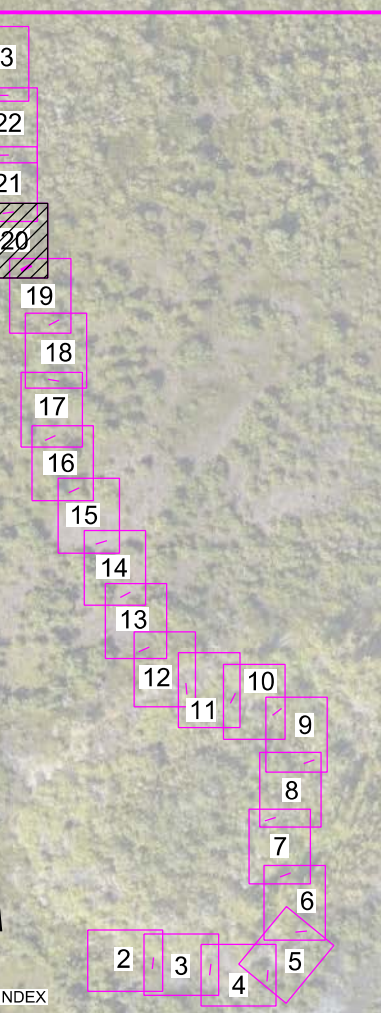
US Army Corps of Engineers
 Jacksonville District
 SAFETY ON THIS JOB
 DEPENDS ON YOU

Department of the Army
 Jacksonville District, Corps of Engineers
 Jacksonville, Florida

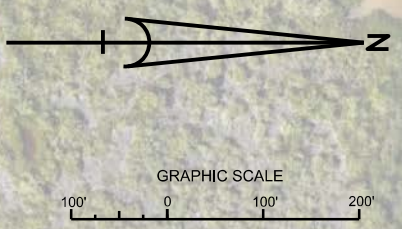
Checked By: GR	Designated By: GRM	Drawn By: GRM	File Name: 220183-06-RB-0001
Designed By: GRM	Drawn By: GRM	Checked: OCT 2022	Reference File: 220183-06-RB-0001

POST-HURRICANE IAN EXAM SURVEY FY23
 6-FOOT PROJECT
 UNCONTROLLED CENTERLINE
 PLAN

Scale: AS SHOWN
 Drawing no.
20
 SHEET 20 OF 23



MAP LABEL	AIDS TO NAVIGATION	PLANE COORDINATES		LATITUDE	LONGITUDE
		X	Y		
R*62°	DBN-62 (10/22)	399,160	633,817	26°04'30.94"	81°46'58.67"
R*64°	DBN-64 (10/22)	398,571	634,965	26°04'42.28"	81°47'05.21"
G*65°	DBN-65 (10/22)	398,481	634,924	26°04'41.86"	81°47'06.19"
INFO SIGN	SIGN (10/22)	398,291	635,772	26°04'50.26"	81°47'08.33"

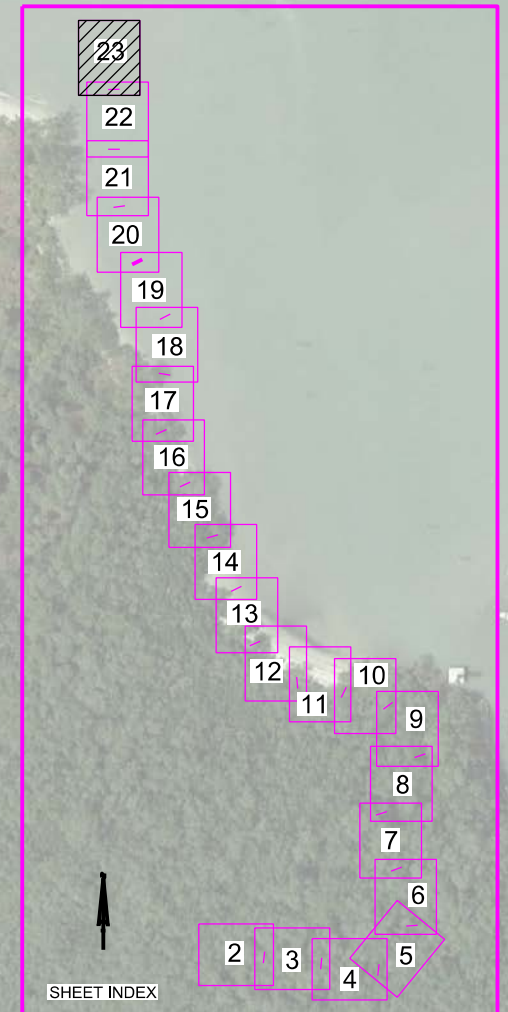




INFO SIGN
G773*
MATCHLINE SHEET NO. 022

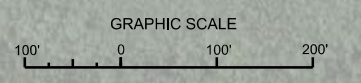
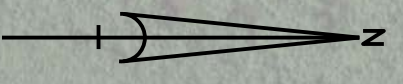
UNCONTROLLED CENTERLINE-1

**CUT-7
(NAPLES TO GORDON PASS)**



SHEET INDEX

MAP LABEL	AIDS TO NAVIGATION	PLANE COORDINATES		LATITUDE	LONGITUDE
		X	Y		
G773*	DBN73 (10/22)	397,945	642,705	26°05'58.89"	81°47'12.56"
INFO SIGN	SIGN (10/22)	397,854	642,707	26°05'58.91"	81°47'13.58"



NOTES:
1. REFER TO SURVEY NO. 23-018.
2. SEE SHEET NO. 1 FOR SURVEY NOTES.

US Army Corps of Engineers
Jacksonville District

SAFETY ON THIS JOB
DEPENDS ON YOU

DEPARTMENT OF THE ARMY
JACKSONVILLE DISTRICT, CORPS OF ENGINEERS
JACKSONVILLE, FLORIDA

Check By: GMR
Designed By: WRM
Drawn By: WRM
File No: WSP23-000-0000
Date: OCT 2022

XXXXXXXXXXXXXXXXXXXX.DGN
XXXXXXXXXXXXXXXXXXXX.DGN
23-018-000-0000.DGN
23-018-000-0000.DGN
NAPLES TO GORDON PASS-CANAL CUT
23-018-000-0000.DGN
Reference File:
23-018-000-0000.DGN

POST-HURRICANE IAN EXAM SURVEY FY23
NAPLES TO BIG MARCO PASS
COLLIER COUNTY, FLORIDA
6-FOOT PROJECT
UNCONTROLLED CENTERLINE
PLAN

Scale: AS SHOWN

Drawing no.
23

SHEET 23 OF 23